

IMPACT REPORT

2021



MSHealth



Acknowledgement of Country

MS Health acknowledges the Traditional Owners and Custodians of the land on which we live and work. We pay our respects to Aboriginal and Torres Strait Islander Elders past and present. We also acknowledge the enduring connection to their Traditional estates across Australia and to the ongoing passion, responsibility and commitment for their lands, waters, seas, flora and fauna as Traditional Owners and Custodians.

© MS Health 2022

Published by MS Health (MSI Reproductive Choices)

GPO Box 1635, Melbourne VIC, 3001

Impact Report: 2021



Contents

Executive summary 05

Key highlights 06

Governance & continuous improvement 07

Corporate social responsibility 08

Access and risk management:

 Dispenser and prescriber program 09

Financial summary 12

Global vision

A world where every birth is wanted

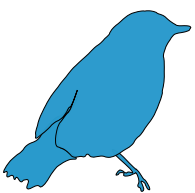
Global mission

Children by choice, not chance

Local purpose

Agency in choice

Our values



Agency



Courage



Integrity



Quality



Safety

Executive summary

We are Australia's only non-profit pharmaceutical company dedicated to distributing medical abortion medication. Our primary goal is to deliver vital reproductive health products and medicine in safe and seamless manner.

In this Impact Report, we reflect on the past year's accomplishments and challenges, particularly in light of the COVID-19 pandemic. The pandemic had a profound impact on all aspects of society.

Our organisation has taken significant steps to maintain a stable supply chain during challenging times, ensuring the continued availability of medical abortion medication for those in need. We collaborated with suppliers, healthcare providers, and other stakeholders to adapt to the rapidly changing environment and mitigate any disruptions to our services.

Moving forward, we are committed to updating our risk management plan to make medical abortion even more accessible for women and pregnant people in Australia. We recognise that barriers to access still exist, and we are dedicated to identifying and addressing these challenges to create a more equitable healthcare landscape.

By collaborating with key stakeholders, we aim to further improve access to reproductive health products and medicine for all those who require them.



Jamal Hakim
Managing Director



Key highlights

Managing C-19 | Supply chains

Covid-19 continued to disrupt supply chains globally by increasing wait times for supplies and impacting shipment of these products into the country. MS Health is proud to say that even with these ongoing challenges we maintained an uninterrupted supply of essential medicines to those that needed them.

Education events | Prescriber

MS Health supported several physician education events this year which aimed to empower doctors with the knowledge needed to provide a Medical Termination of Pregnancy for their patients; and by doing this improve healthcare access to the Australian public. Further physician outreach and engagement will be part of 2022 as MS Health continues to drive patient access.

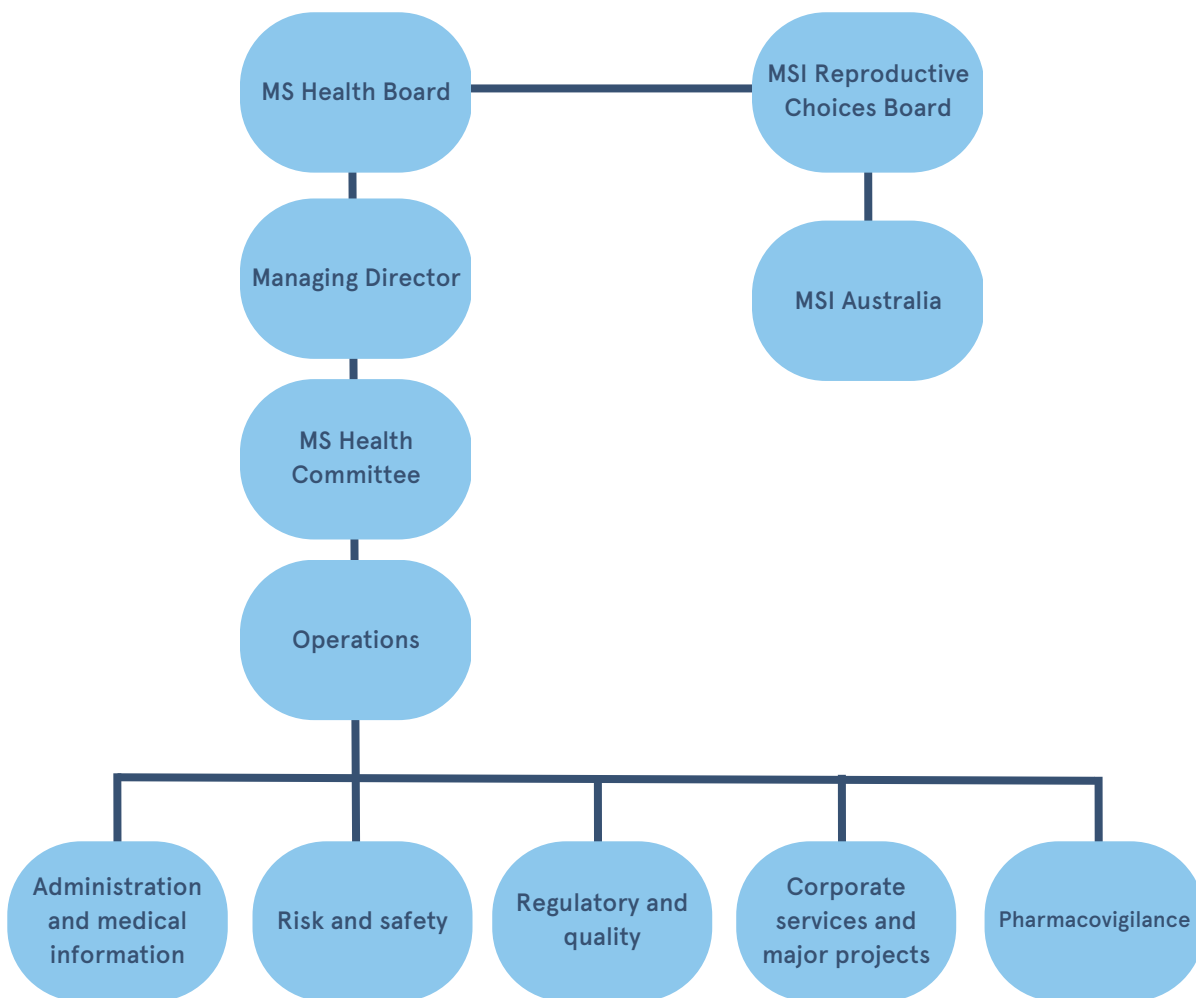
Reshaping abortion care

MS Health co-hosted an a National Forum on Reshaping Abortion Care in Australia. The forum discussed what reform was needed in abortion care in Australia and MS Health discussed planned reviews of the Therapeutic Goods Administration (TGA) Risk Management Plan for medical abortion.

Governance and continuous improvement

Accountability for implementation and review of our strategic plan, business improvement initiatives, risk and safety, as well as operational oversight is provided by a committee and governance framework that reports directly to the Managing Director and the MS Health Board.

MS Health has four board members, including at least one board representative from MSI Reproductive Choices.



Corporate social responsibility

Globally, every minute of every day, 67 women and pregnant people resort to an unsafe abortion. By the time we go to bed today 96,000 women will have risked their lives with an unsafe procedure and more than 44,000 will have such severe complications they will need to go to hospital.

5% of our revenue at MS Health is spent on the mission for reproductive choice, locally in Australia and globally. It is foundational in the drive for gender equality and to a future where women and girls take their rightful place in all aspects of society.

Access and risk management

Dispenser and prescriber program

Summary Table 2021

	ACT	NSW	NT	QLD	SA	TAS	VIC	WA	Total
Active Dispensers	141	1,197	106	939	186	218	1,272	353	4,412
Active Prescribers	66	850	122	601	157	105	923	235	3,059
Total	207	2047	228	1540	343	323	2195	588	7471

Total Users

	ACT	NSW	NT	QLD	SA	TAS	VIC	WA	Total
Metro	202	1,377	-	857	248	-	1602	383	4669
Regional	5	640	144	584	82	318	593	121	2487
Remote	-	30	84	99	13	5	-	84	315
Total	207	2047	228	1540	343	323	2195	588	7471

- Compared to 2020, total number of active dispensers decreased by 17% whereas the total number of active prescribers increased by 8%
- SA's active dispensers decreased the most by 22%
- ACT's active prescribers grew the most by 29%

Active dispensers by region per state

	ACT	NSW	NT	QLD	SA	TAS	VIC	WA	Total
Metro	139	776	-	523	125	-	955	232	2,750
Regional	2	399	64	365	55	215	317	72	1,489
Remote	207	2,047	228	1,540	343	323	2,195	588	7,471
Total	141	1,197	106	939	186	218	1,272	353	4,412

Number of women and people of childbearing age per dispenser in each region per state

	ACT	NSW	NT	QLD	SA	TAS	VIC	WA
Metro	202	1,377	-	857	248	-	1602	383
Regional	5	640	144	584	82	318	593	121
Remote	-	30	84	99	13	5	-	84

- Regional ACT and Remote NSW & TAS have seen more active dispensers serving the women and people of childbearing age
- Whereas rest of the locations has experienced fewer active dispensers serving women and people of childbearing age

Active prescribers by region per state

	ACT	NSW	NT	QLD	SA	TAS	VIC	WA	Total
Metro	63	601	-	334	123	-	647	151	1,919
Regional	3	241	80	219	27	103	276	49	998
Remote	-	8	42	48	7	2	0	35	142
Total	66	850	122	601	157	105	923	235	3,059

Number of women and people of childbearing age per prescriber in each region per state

	ACT	NSW	NT	QLD	SA	TAS	VIC	WA
Metro	1,863	2,631	-	2,511	2,724	-	2,047	3,609
Regional	62	1,759	505	1,853	3,312	1,182	1,145	2,006
Remote	-	1,059	626	657	1,925	1,053	-	1,153

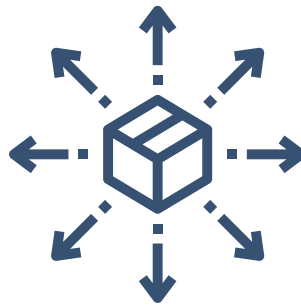
- Metro SA & WA and Remote QLD & WA have seen fewer active prescribers serving women and people of childbearing age
- Whereas rest of the locations has experienced more active dispensers serving women and people of childbearing age with the highest in NSW

Financial summary

Our financial summary provides an overview of where revenues are spent and invested, and what kind of contribution we made to our global mission in 2021.

64%

Distribution and
operating costs



31%

Risk management
and education



5%

Contribution
to mission





Further information and feedback

Your feedback is valuable to us.
Please use the details below to contact us
about this report



1300 515 883



info@mshealth.org.au

How to reference this document

MS Health (2022). Impact Report 2021, Melbourne, Australia: MSI Reproductive Choices